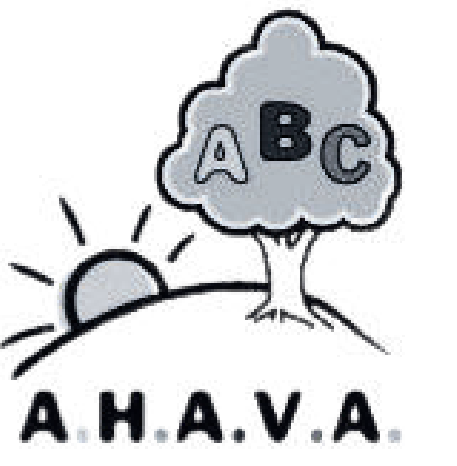


Ellen Melon

Level 2



© 2025 A.H.A.V.A.

ahava.org@gmail.com

A.H.A.V.A. grants permission to photocopy these pages for individual/classroom/school use, but not for commercial purposes.

by Rivkah L. Aviad
Illustrations by Gita Weinberger

1

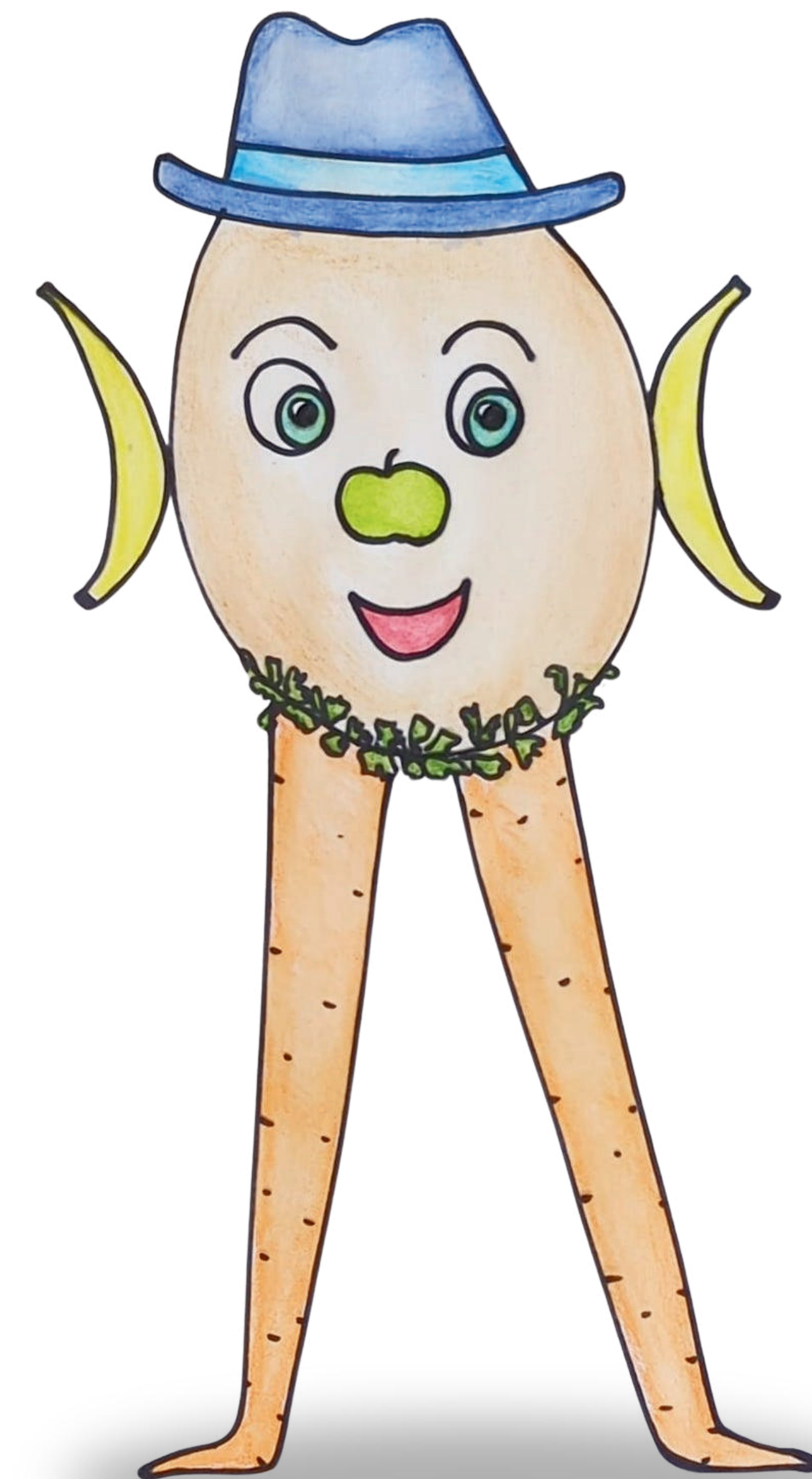
Ellen Melon has
a head like a melon
and ears like bananas.



She has legs like carrots
and a nose like an apple.

2

Ellen Melon's dad has
a head like a melon
and ears like bananas.



He has legs like carrots
and a nose like an apple.

Ellen Melon's mom has
a head like a melon
and ears like bananas.



She has legs like carrots
and a nose like an apple.

Ellen Melon's sister has
a head like a melon
and ears like bananas.



She has legs like carrots
and a nose like an apple.



Ellen Melon does not eat melons.
 She does not eat bananas.
 She does not eat carrots
 and she does not eat apples.

What does Ellen Melon eat?



Ellen Melon eats pasta.
 She eats hamburgers.
 She eats falafel
 and she eats chips.

Ellen Melon eats pizza.

She eats yogurt.

She eats sandwiches

and she eats salad.

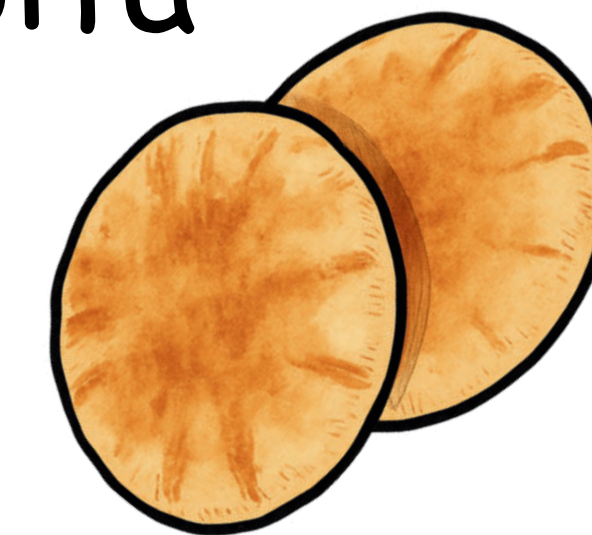


What do **you** eat?

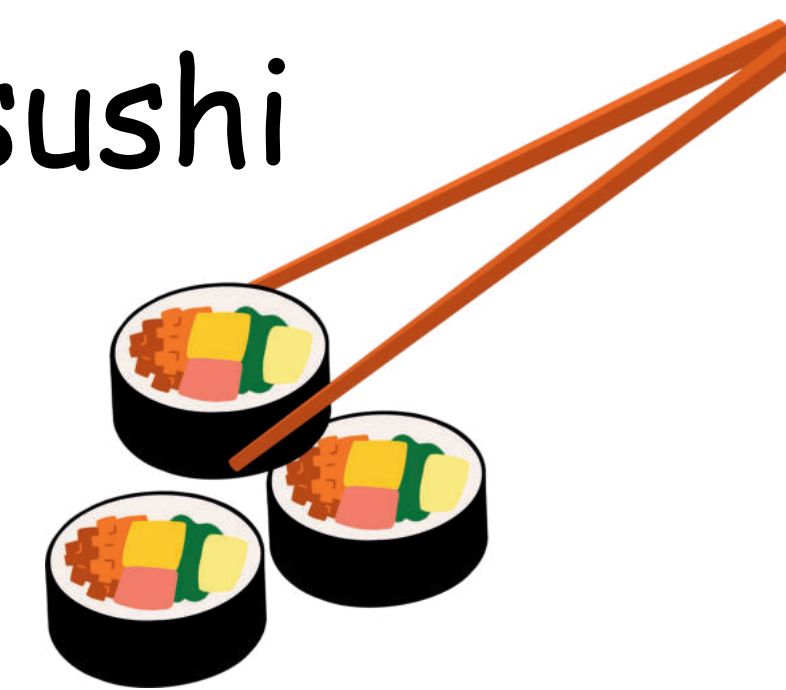


broccoli

pita



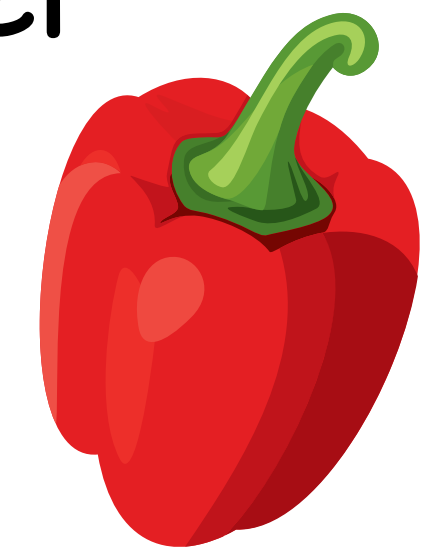
sushi



shakshuka



pepper



tacos



I eat...